

Enrollment of iOS devices is not much different from registering Android devices.

To add a single device to the system, hover over the **+** button in the **DEVICES** tab and choose the '**Enroll a device**' option. A step-by-step modal window will appear and guide you through the enrollment process.

First, select a platform - Apple.

The screenshot shows a modal window titled "Add a new device". At the top, there is a progress bar with five steps: "Choose a platform", "Assign a user", "Policy preview", "Choose a method", and "Confirmation". The first step, "Choose a platform", is currently active, indicated by a blue circle. Below the progress bar, the text "Choose a platform of the device you want to add." is displayed. There are three selectable options, each in a box: "Android" with an Android robot icon and the text "Add Android device"; "Apple" with an Apple logo icon and the text "Add Apple device"; and "Other" with a generic device icon and the text "Add other device".

In the second step select the device user and, if needed, edit the user's email and phone number. Select the enrollment method - COBO for fully managed devices or BYOD for devices with work profile. Depending on the selected method, the appropriate policy will be assigned. BYOD method will also require Managed Apple ID to be entered. You can also select the device group.

### Add a new device

●

○

●

●

●

Choose a platformAssign a userPolicy previewChoose a methodConfirmation

User name

Louis Litt

Email

l.litt

Phone number

48600123123

Enrollment method

Fully managed device (COBO)

User enrolled device (BYOD)  
supported from iOS 13 and macOS 10.15 Catalina

Device groups

Select group

⚠ User missing? Add a new one [here](#).

Back

Next

The third step displays policy and apps that will be assigned to the device. This is based on the device group or user group.

### Add a new device

●

●

○

●

●

Choose a platformAssign a userPolicy previewChoose a methodConfirmation

View the policy assigned to your device

Policies are assigned to the device based on user groups or device groups.

Policy: Default general policy

Security settings

☒ Disable AirPrint

☒ Disable saving of AirPrint credentials on iCloud

☒ Require trusted certificates for TLS printing communication

☒ Disable iBeacon discovery of AirPrint printers

Mandatory applications

Mandatory configurations

Back

Next

In the penultimate step select the desired enrollment method. For iOS devices there are two possible options.

Add a new device

Choose a platform

Assign a user

Policy preview

Choose a method

Confirmation

Time to pick a method! There are two different enrollment options you can choose from.

Send enrollment link

Email


I.litt@famoc.com

Phone number

48600123123

Send

Scan QR code



Copy link | Refresh

Back

## Send Enrollment Link

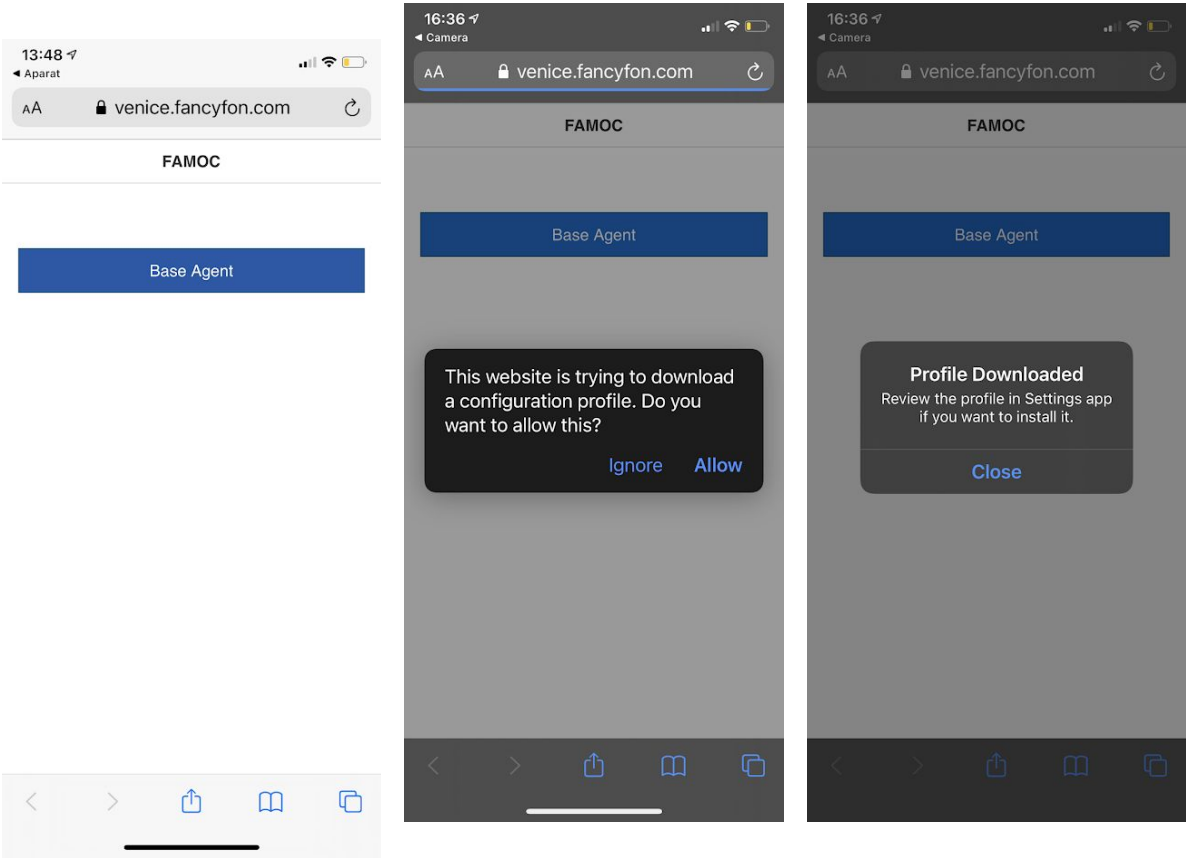
A link to the enrollment page will be sent to the user's email address or phone via SMS. Note: To use the sms option you need to have the SMS gateway in place.

## Scan QR Code

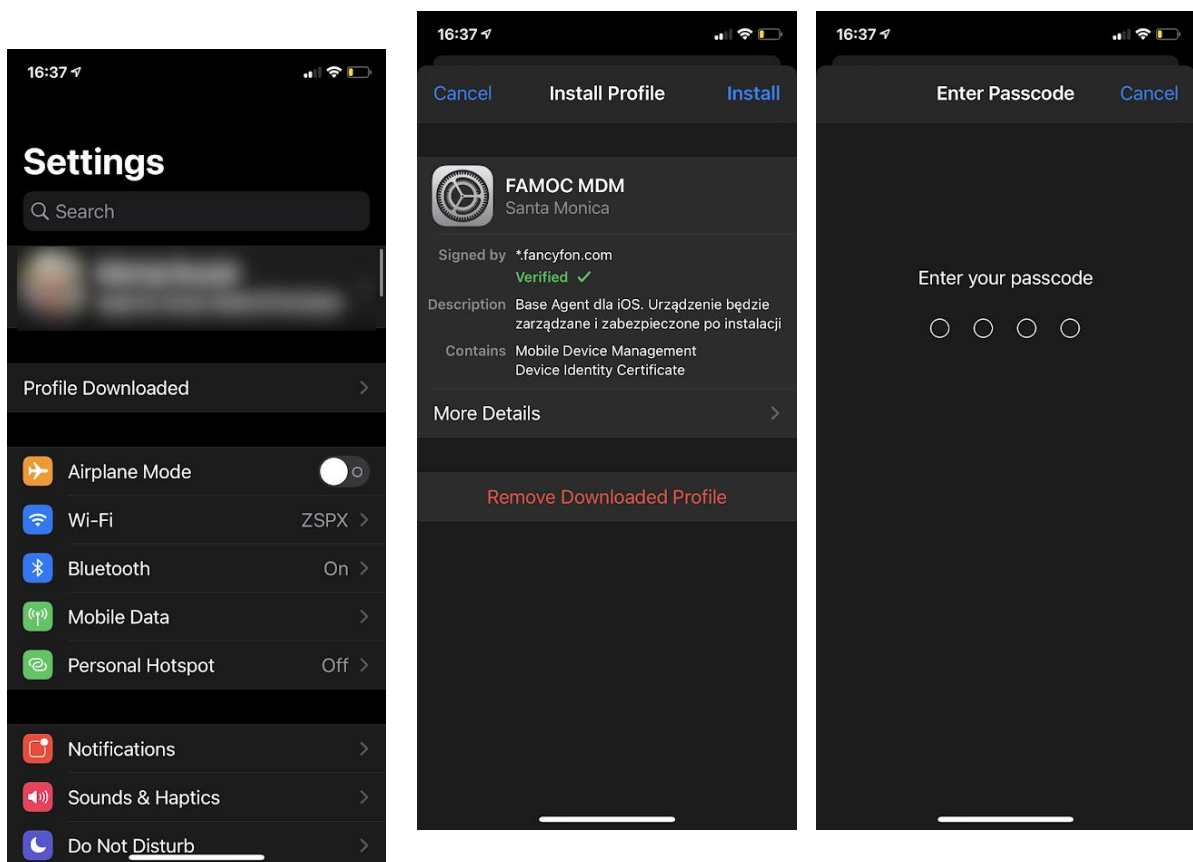
You can scan the QR code using a device camera or QR code reader apps. Note: set the QR reader apps to open links automatically. Otherwise, the QR code will be counted as used before opening the link in the web browser. After scanning, the device displays the enrollment page.

After downloading the FAMOC app a new device record is automatically created in the system and the device is assigned to the selected user.

Click Base Agent to start downloading profile.



After downloading the profile, go to settings. The downloaded profile will be displayed under the user ID. Click on the Profile and then click Install. Confirm with your passcode.



Proceed with installation and confirm that you trust the profile source. After the profile is installed, management is active.

