




# Techstep Essentials MDM

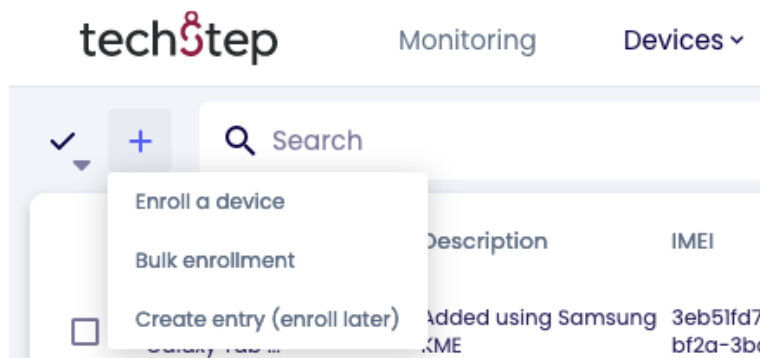
**Adding device –  
Android fully  
managed**

Date: 21/03/2023



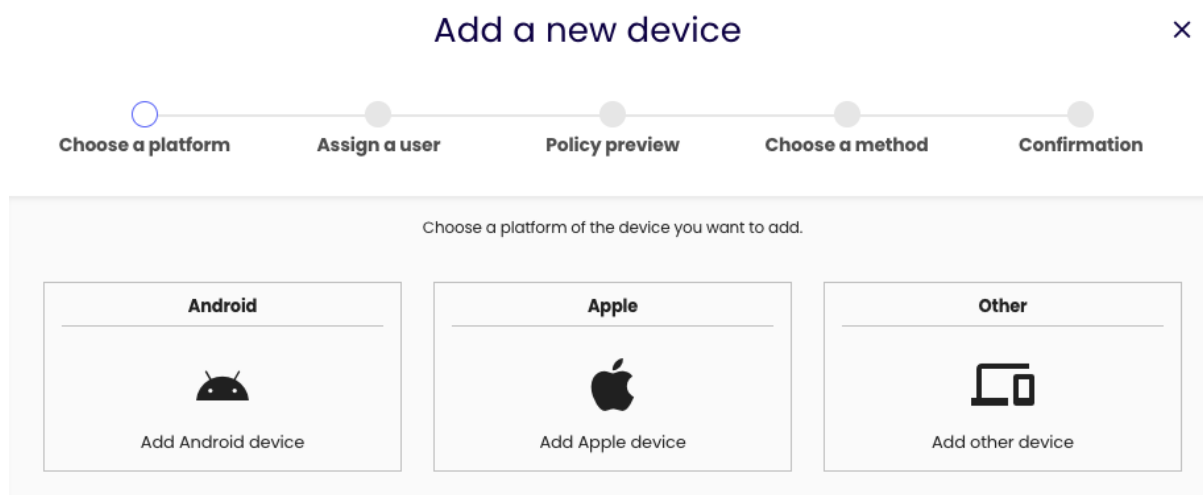
Essentials MDM offers an easy enrollment Wizard that allows to add new devices to the system in a quick and simple way. This feature allows you to enroll a single device using various methods: email, phone number or QR code; or set the device up in Device Owner mode using NFC or a QR code.

To add a single device to the system, hover over the  button in the DEVICES tab and choose the 'Enroll a device' option.



A step-by-step modal window will appear and guide you through the enrollment process.

First, select a platform. You can choose between Android, Apple or other devices (e.g. Windows). In this case we will select Android.



In the second step select the device user and, if needed, edit the user's email and phone number. Select the enrollment method – COBO for fully managed devices, BYOD for devices with work profile or COSU for dedicated devices. Depending on the selected method, the appropriate policy will be assigned. You can also select the device group.

You can read a detailed description of adding devices in BYOD mode here:

<https://support.famoc.com/en/support/solutions/articles/23000022122-adding-a-new-android-device-to-famoc-in-byod-mode>

## Add a new device

×

Choose a platform

Assign a user

Policy preview

Choose a method

Confirmation

**Enrollment method**

Fully managed device (COBO)

Device with work profile (BYOD, WPC)

Dedicated device (COSU)

Shared device BETA

**User authorization required** ⓘ

No authentication

Any user

Selected user only

**User name**

User Techstep (techstep) ▾

**Email**

techstep@techstep.no

**Phone number**

+4747474747

**Description**

Enter description

**Device groups**

Select group

ⓘ User missing? Add a new one [here](#).

Back

Next

The third step displays policy and apps that will be assigned to the device. This is based on the device group or user group

## Add a new device

×

●

●

○

●

●

Choose a platformAssign a userPolicy previewChoose a methodConfirmation

### View the policy assigned to your device

Policies are assigned to the device based on user groups or device groups.

Policy: **Default policy**

Security settings

☒ The auto-update Managed Google Play apps policy settings

Mandatory applications


Mandatory configurations

Back

Next

In the penultimate step select the desired enrollment method. For Android Devices it is recommended to use Device Owner mode. It requires a new or factory reset device but gives you access to more features.

### Set up Device Owner



**Ensure that the target device meets the following requirements:**

- ☒ Running Android 6.0+
- ☒ New/factory reset
- ☒ NFC should be turned ON
- ☒ Connected to the charger

**Select your device system version**

Android 8 or newer ▾

Select

## Set up Device Owner

This choice allows you to enroll an Android device in the Device Owner mode.

## Add a new device

×

● Choose a platform

● Assign a user

● Policy preview

○ Choose a method

● Confirmation


### Step 1: Set up a WiFi (optional)

This enrollment method requires internet connection. If there's no SIM card in the device, fill in WiFi settings below.


Network name

Password

### Step 2: Choose NFC or QR code



**Go to master device**  
Method unavailable. To enroll a device using NFC you need a master device enrolled using a different method (sms, email, QR code). Make sure your Android device has active NFC and set yourself as the device user.



**Go to the target device**  
The target device needs to stay on the welcome screen. Tap the screen 6 times to download QR code scanner and enroll the device.

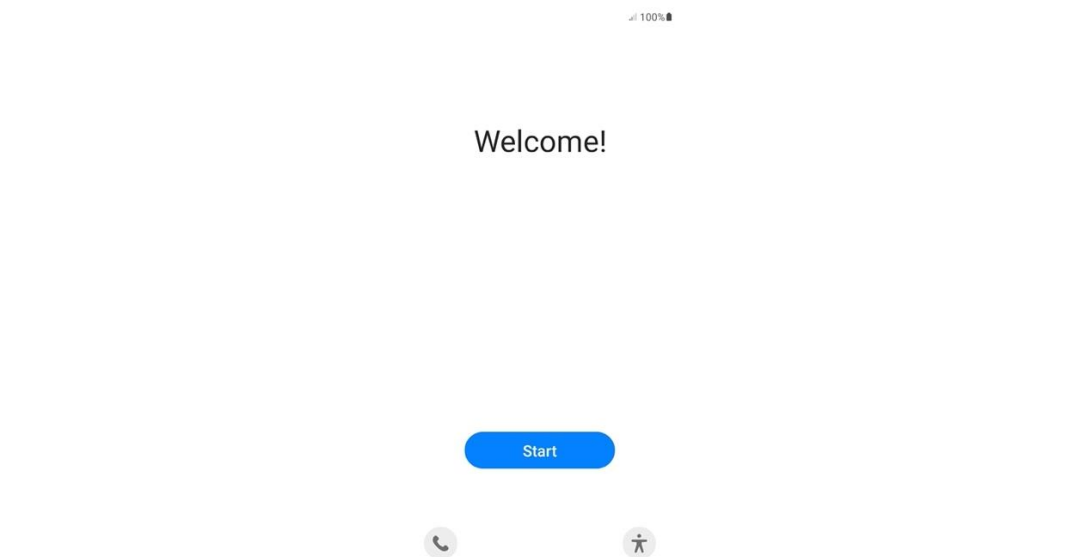
Back

The first step of this process is optional and allows the administrator to configure a WLAN connection on the device during enrollment (Keep in mind that the device will require Internet access to communicate with Essentials MDM to properly configure and finish the enrollment process.) Then, select one of the two methods for enrollment in the Device Owner mode: NFC or QR enrollment.

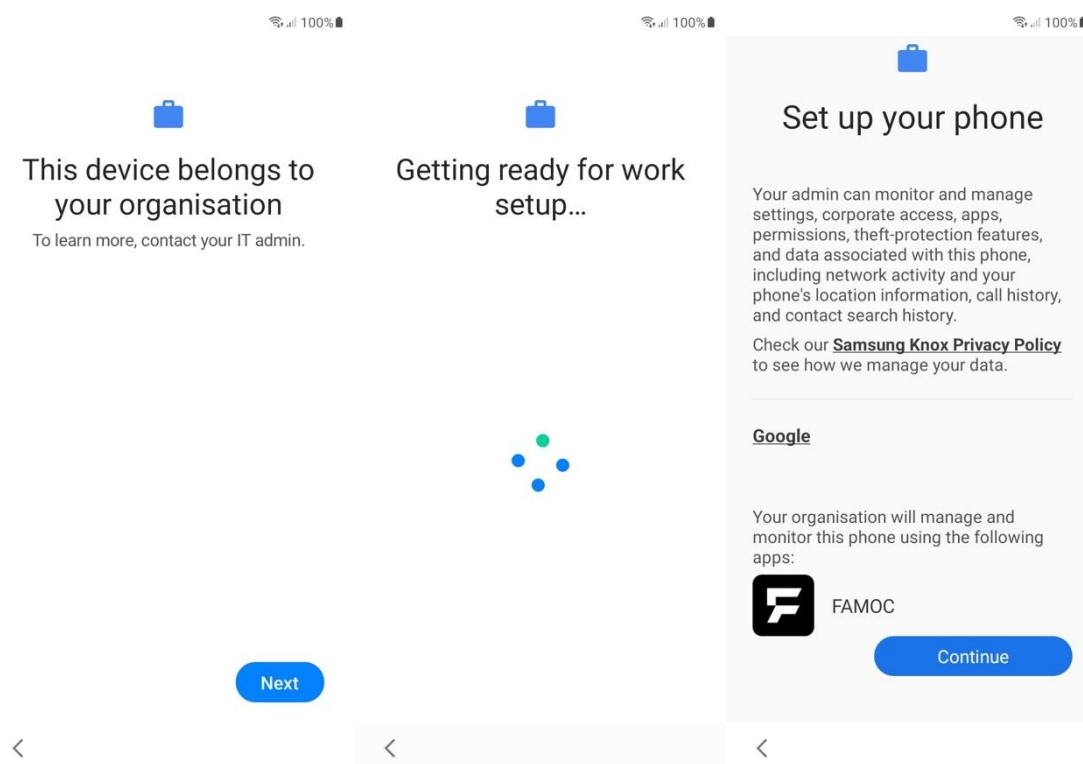
The NFC method requires an NFC-enabled, admin-assigned device already enrolled (not necessarily in DO mode) to Essentials MDM. You need to select such a device for use as a master device for scanning. Choose the device and click 'Start'. The master device will receive a request to start the NFC scan. Use the target device to scan the new device by positioning the devices back to back. When the new device is detected by the master device, tap the screen on the master device to start the enrollment process. The new device will be assigned to the selected user. Note: This method requires both devices to be NFC-enabled, with the functionality turned on the master device. The new device must be factory reset or new with Android 6.x or higher.

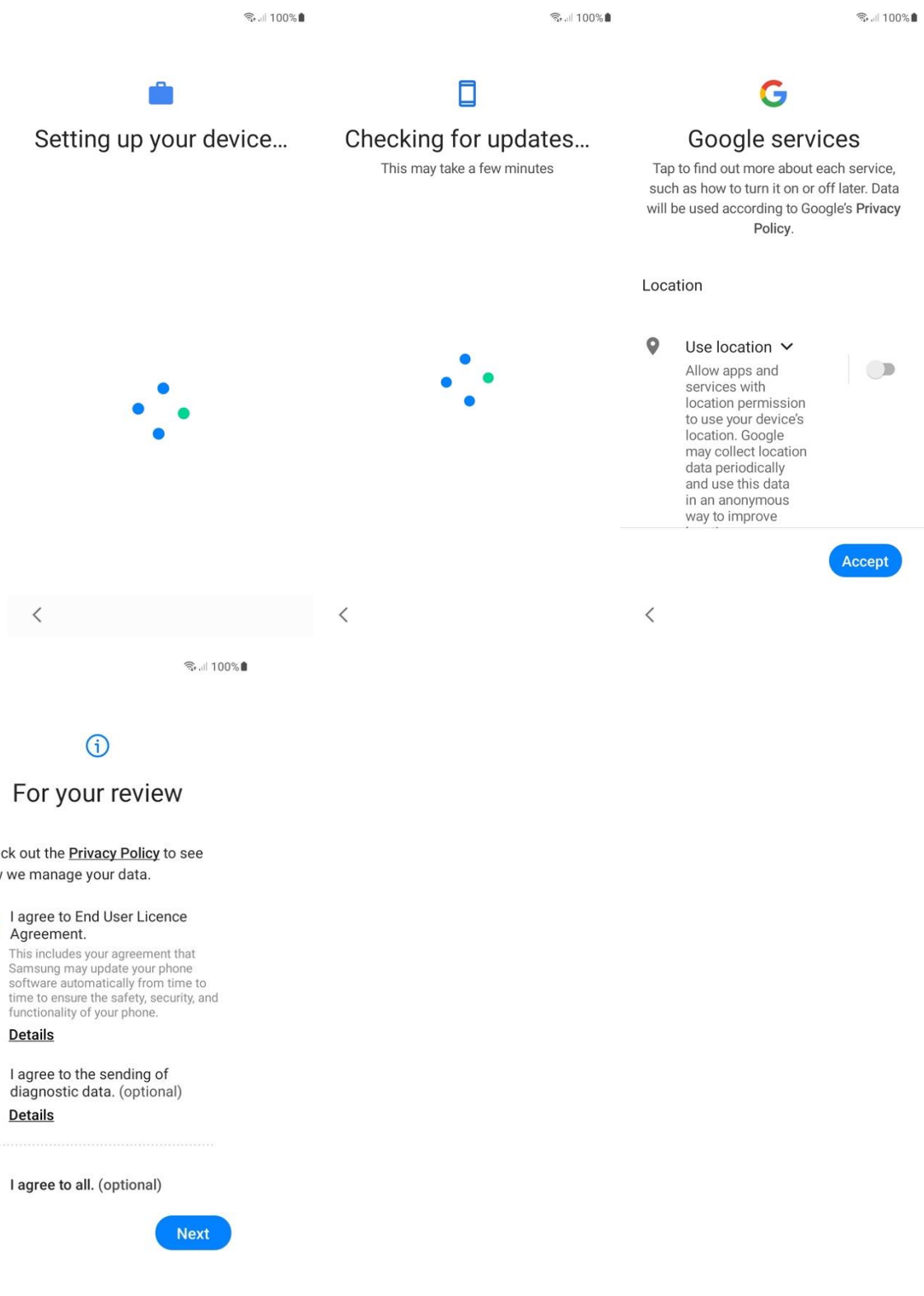
NOTE: NFC method has been deprecated and will no longer be developed since Android 10.

The QR method does not require an additional device enrolled. The QR Reader can be easily accessed by tapping the welcome screen (on the screen below) on a factory reset/new device 6 times.



After scanning the code, the process is automatic, user confirms the registration by clicking Next or Continue in the following screens





Note: This method is available only for devices with Android 6.x of higher.