



# Bulk enrollment Apple DEP

Date: 01/03/2023



Synchronization with Apple Device Enrolment Program provides a fast and easy way to deploy MDM profile on your corporate iOS devices.

For more info about DEP, please refer to Apple documentation at:

[https://www.apple.com/business/docs/site/Apple\\_Business\\_Manager\\_Getting\\_Started\\_Guide.pdf](https://www.apple.com/business/docs/site/Apple_Business_Manager_Getting_Started_Guide.pdf)

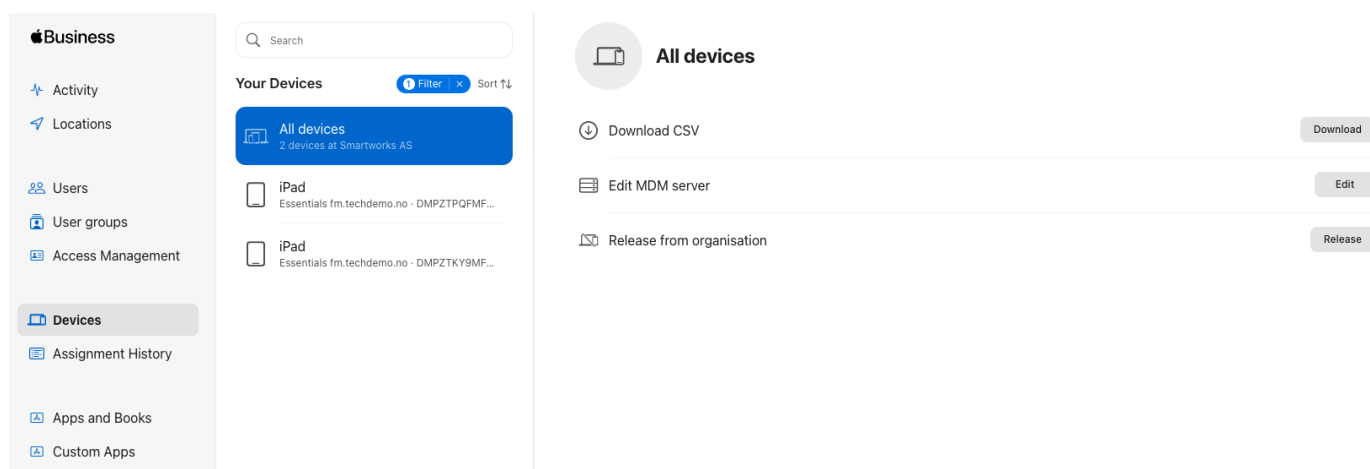
## Connecting DEP account with Essentials MDM

To configure DEP enrolment in ESSENTIALS MDM, check our guide ***Integration with Apple DEP***.

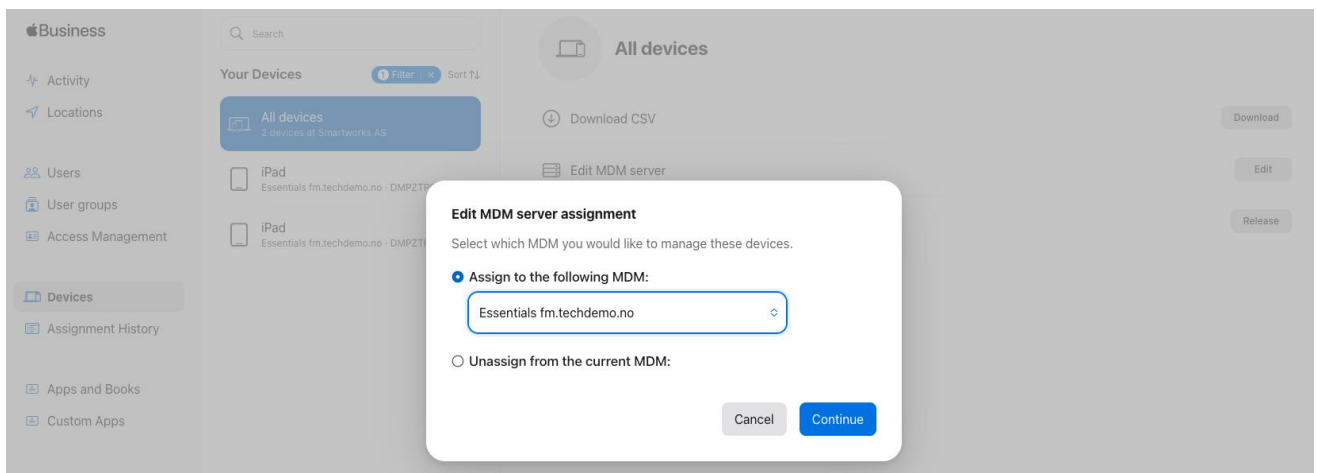
## Bulk enrollment

In order to bulk enroll devices into your Essentials MDM console you have to add devices to the ABM account integrated to Essentials MDM. Once the devices have been added and appear on the desired Apple ABM account, you have to assign them to your Essentials MDM server.

First locate the devices you want to add to Essentials MDM on the ABM account. Select "All devices" (or the devices you want to add to your Essentials server) and then click "Edit" at "Edit MDM server". (You can also set a MDM server as default in ABM so you do not have to assign the MDM server manually, they will be assigned automatically)

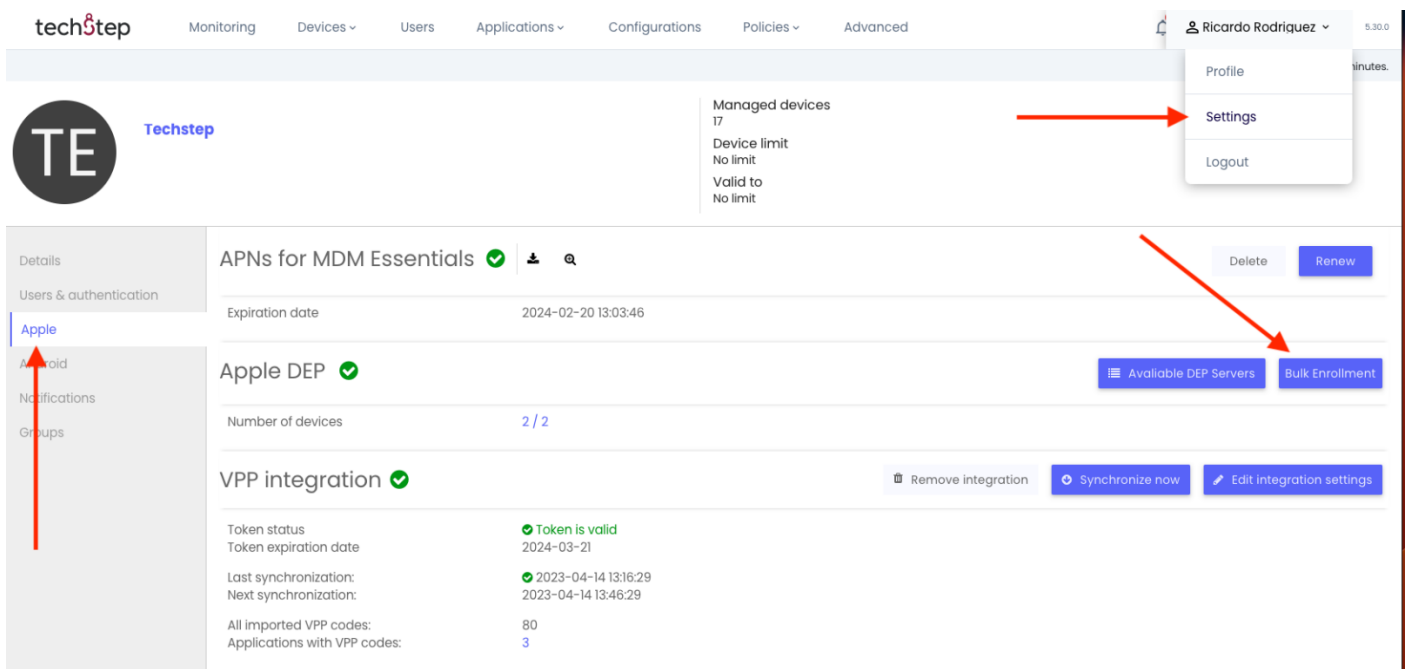


Assign the Essentials MDM server and press “Continue”. Confirm that you want to add these devices to Essentials MDM.



In order to add these devices to Essentials you have to do the following:

In the Essentials MDM console navigate to Settings and then to Apple (on the left side). Then press “Bulk enrolment”.



Locate the desired DEP account name and press the three dots under “Actions”. Press “Synchronize now”. After you receive the message “Operation performed successfully” you will be able to see the devices under “Devices” in the Essentials MDM console.

**techStep** Monitoring **Devices** Users Applications Configurations Policies Advanced 5:30:0

SETTINGS / BULK ENROLLMENT / APPLE DEP

### DEP Synchronization

**Before you start using Device Enrollment Program (DEP) for business make sure you meet the following requirements:**

- Your organization must be enrolled in the Apple Deployment Program. Don't have the DEP Account? Create it [here](#).
- Devices ordered from Apple or purchased from authorized resellers or carriers.
- DEP is available in your country or region (check the list [here](#)).
- To manually enable device in the DEP use the Apple Configurator tool.

[Start now](#)

#### Existing DEP Accounts

DEP account name	Admin ID	Server token expires on	Last synchronization	Managed/synchronized	Status	Actions
<a href="#">Essentials fm.techdemo.no</a>	jorn@techstepnot.appleid.com	2024-02-14 12:04:38	2023-04-14 13:22:49	2 / 2	OK	<div><div></div><div>Edit</div><div>Delete</div><div>Stop synchronization</div><div>Restart synchronization</div><div>Synchronize now</div></div>
<a href="#">Essentials MDM</a>	adminoskar@techdemo.no			0 / 0		

Back